

## **INSTALLATION GUIDE**

**Acquire / Panther**

## Table of Contents

1. Introduction .....	3
2. Minimal system requirements.....	3
3. Acquire software installation.....	3
4. Panther USB driver installation.....	5
4.1 Disable driver signature enforcement. Mandatory with Windows 8 and Windows 10 .. <b>Erreur ! Signet non défini.</b>	
4.2 Driver installation .....	5
5. Start up Acquire software.....	9

## 1. Introduction

---

This document describes the Acquire software and the hardware installation. A Windows Administrator account is required to install Acquire software.

## 2. Minimal system requirements

---

- Microprocessor: Core i5 or equivalent (Core i7 is recommended)
- RAM: 8 Gb (16 Gb are recommended) 16 Gb is the minimum to run a PANTHER\_256:256 system
- Screen resolution: HD (1920x1080 px)
- 1 USB2 Port for the dongle if the license is activated with a hardware key
- 1 USB3 Port for each Panther module
- Graphic card: Nvidia GTX 1050 to 1080, RTX 2060 to 4080, with a minimum of 4 GO of memory
- Windows 7, 8 or 10, OS 64bits

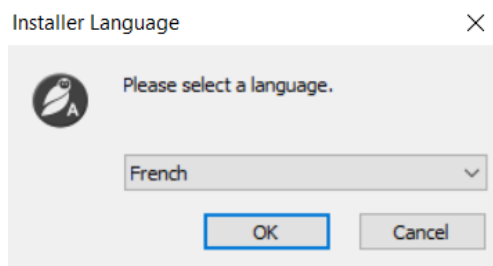
## 3. Acquire software installation

---

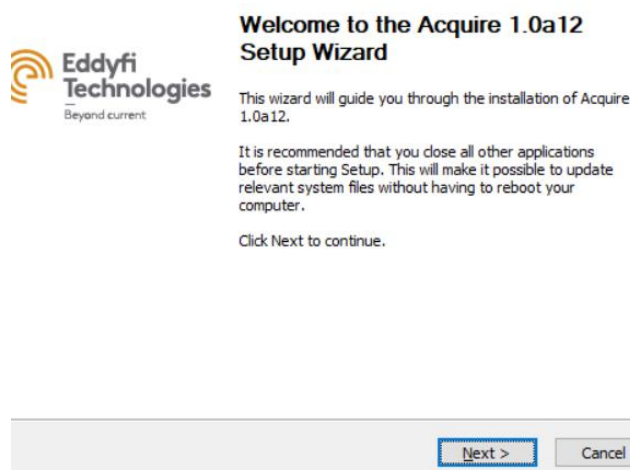
To install Acquire, the following steps must be completed:

Run the file « Acquire\_X.X.X.exe » and follow the installation program instructions:

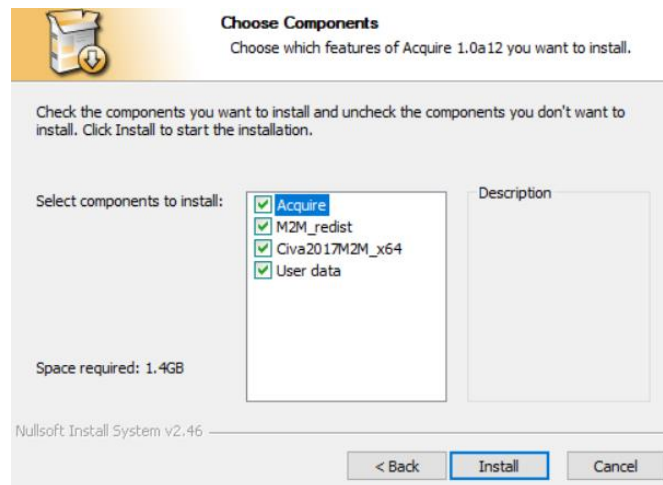
- First, the following windows will appear:



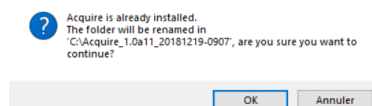
- Select the language and click the «OK» button.



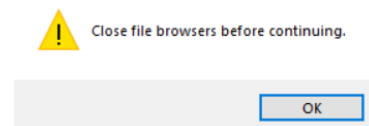
Click the «**Next**» button



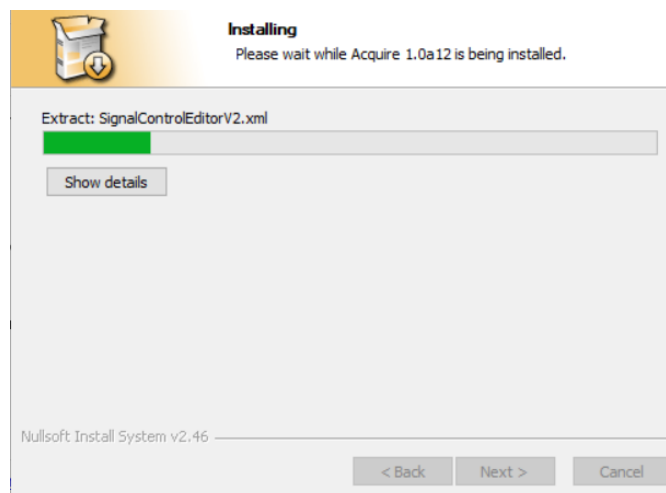
Select all components then click on the «**Install**» button



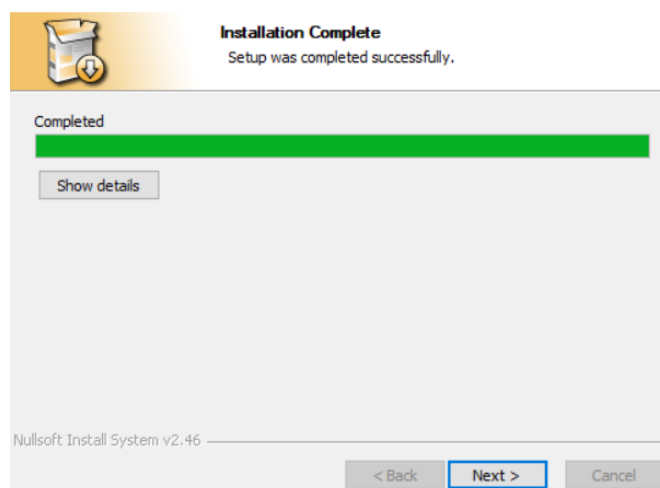
In the case of a previous Acquire version already installed on the computer, this version will be automatically renamed. Click on the «**OK**» button.



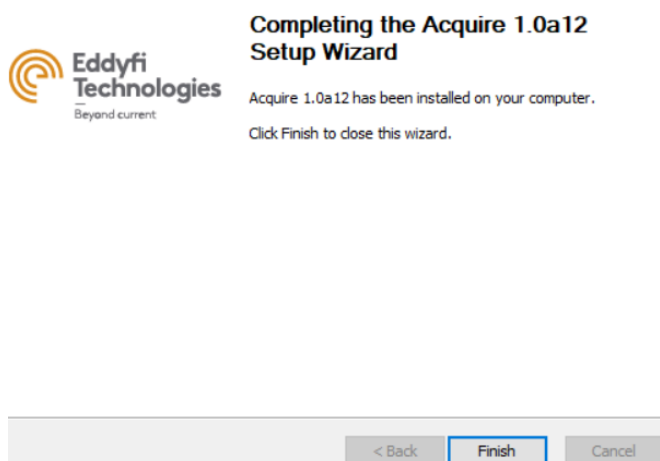
Close all File Explorer windows and then click «**Ok**»



When the software installation is finished, the following window appears:



Click on the «**Next**» button.



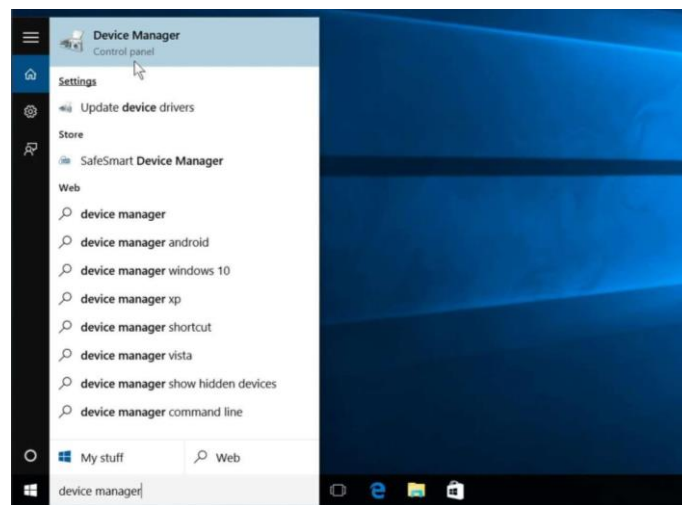
The Acquire software installation is finished. The default installation folder is C:\Acquire. A shortcut Acquire has been created automatically on the desktop.

## 4. Panther USB driver installation

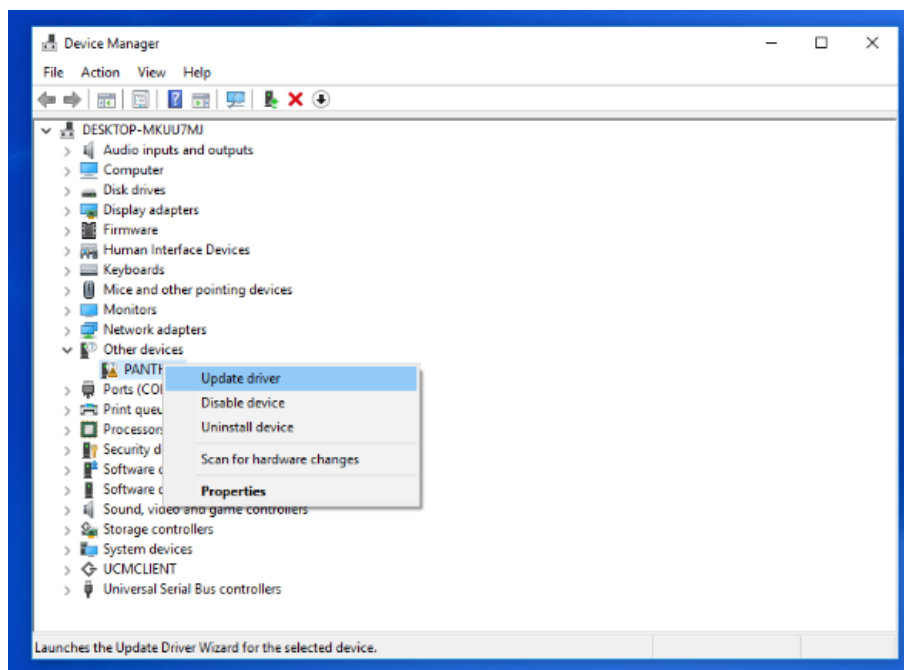
---

### 4.1 Driver installation

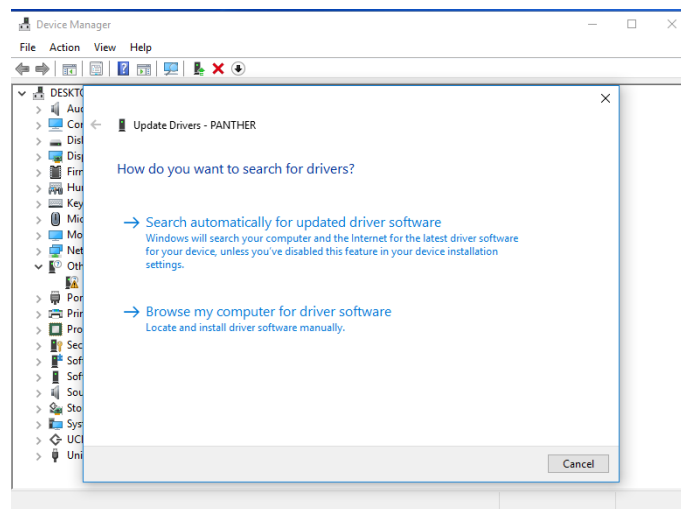
1. Connect the Panther device to a USB 3 port of the computer and turn it on.
2. On the Windows "Search Box" type "Device Manager" and select "Device Manager" item.



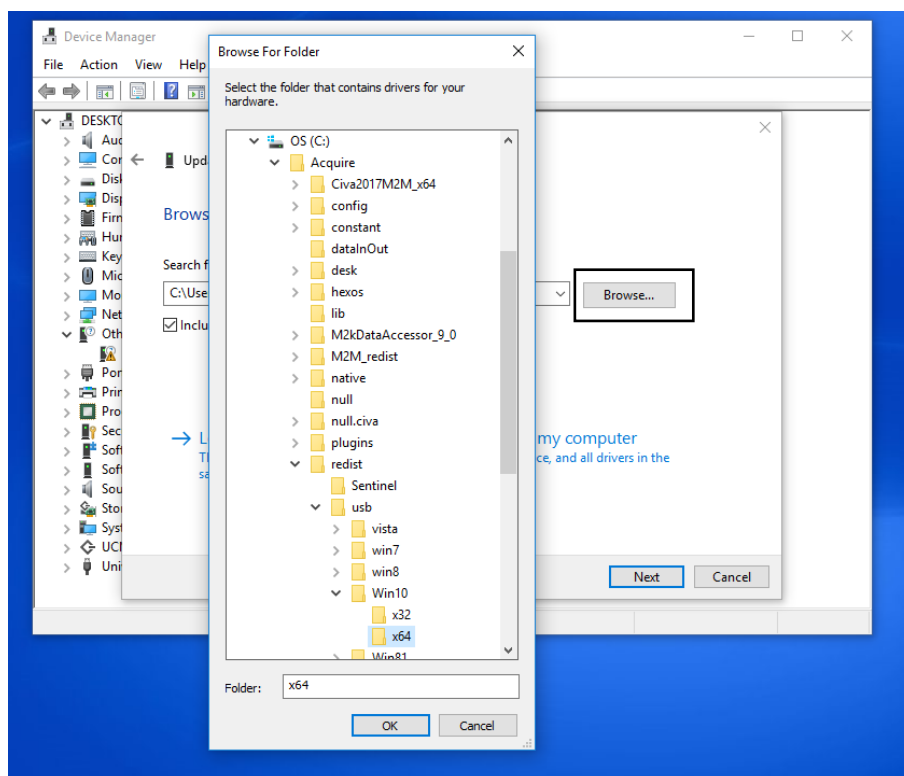
3. Open the “Device Manager” panel. Search for the Panther unit under the section “Other devices” and click right on it. Select Update driver.



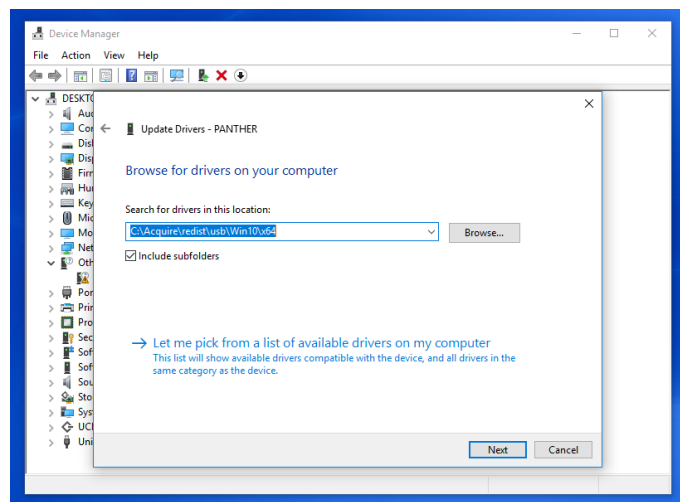
4. Select the option “Browse my computer for driver software”



5. Click on “Browse” and search for the “usb” folder located into Acquire installation directory. By default, the path is: C:\Acquire\redist\usb. Select the folder that corresponds to the version of your operating system. For instance: C:\Acquire\redist\usb\Win10\x64 signed drivers

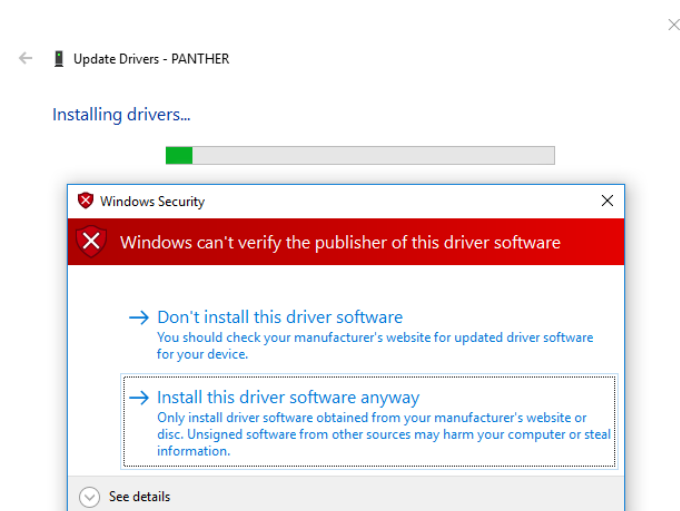


6. Once the driver path is correct, press “Next”



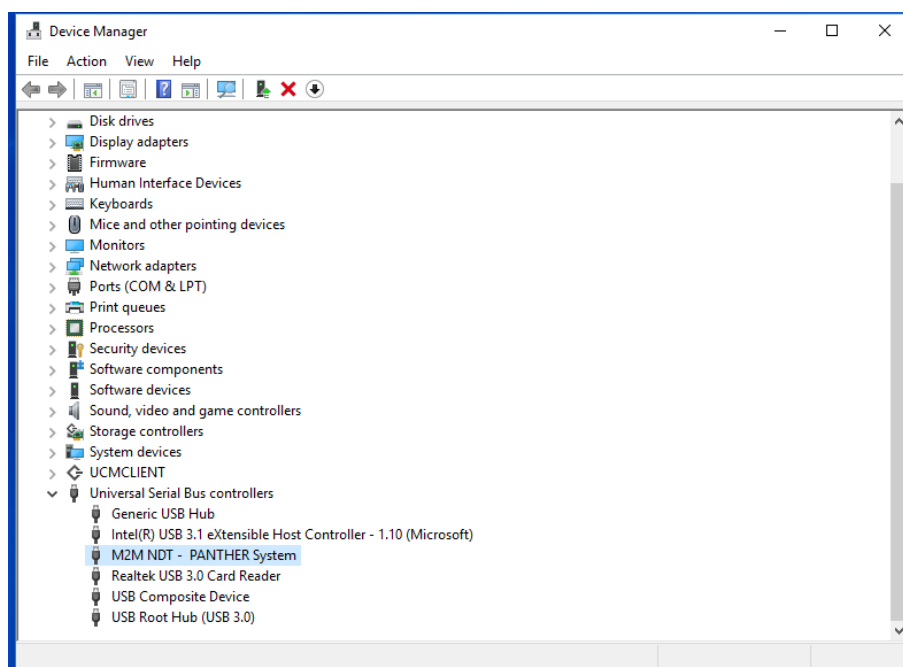
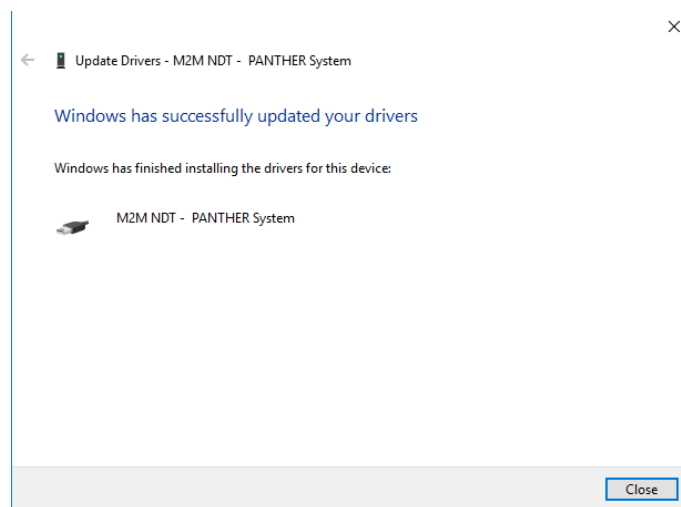
7. If you get the following message “Windows encountered a problem installing the driver software for your device”, please make sure you have disabled the driver signature enforcement (section **Erreur ! Source du renvoi introuvable.**)

If you get a “Windows Security” message, click on install anyway. This message is displayed because the Panther driver is unsigned, and you have successfully disabled the driver signature enforcement.



8. After installation, press “Close”. Please make sure that the Panther is displayed without error icon on the device manager panel. The system will be listed under the section “Universal Serial Bus Controllers” with the name “M2M- NDT – PANTHER System”





## 5. Start up Acquire software

To start Acquire software, double click on Acquire shortcut on the desktop.

You can also start Acquire software by double clicking on "Go\_Acquire\_US.bat" located into the Acquire installation directory (By default: C:\Acquire)