



## **INSTALLATION GUIDE**

**Acquire 1.2 / M2M Panther**

## Table of Contents

1. Introduction .....	3
2. Minimal system requirements.....	3
3. Acquire software installation.....	3
4. Panther USB driver installation.....	6
4.1 Disable driver signature enforcement. Mandatory with Windows 8 and Windows 10 .....	6
4.2 Driver installation .....	9
5. Start up Acquire software.....	12

## 1. Introduction

---

This document describes the Acquire software and the hardware installation. A Windows Administrator account is required to install Acquire software.

## 2. Minimal system requirements

---

- Microprocessor: Core i5 or equivalent (Core i7 is recommended)
- RAM: 8 Gb (16 Gb are recommended) 16 Gb is the minimum to run a PANTHER\_256:256 system
- Screen resolution: HD (1920x1080 px)
- 1 USB2 Port for the dongle if the license is activated with a hardware key
- 1 USB3 Port for each Panther module
- Graphic card: Nvidia GTX 1050 (Nvidia GTX 1080 or later is recommended) with a minimum of 4 GO of memory
- Windows 7, 8 or 10, OS 64bits

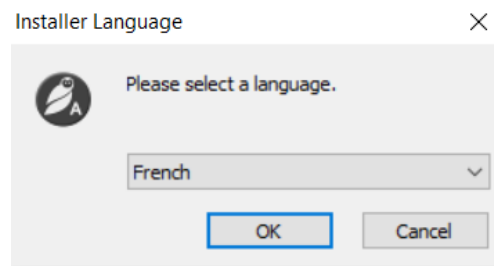
## 3. Acquire software installation

---

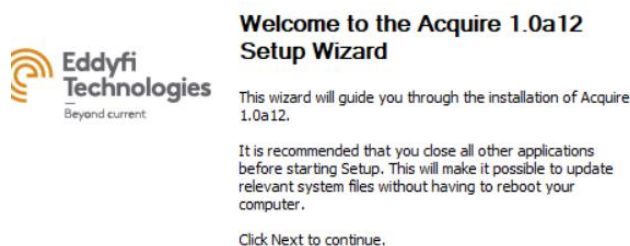
To install Acquire, the following steps must be completed:

Run the file « Acquire\_X.X.X.exe » and follow the installation program instructions:

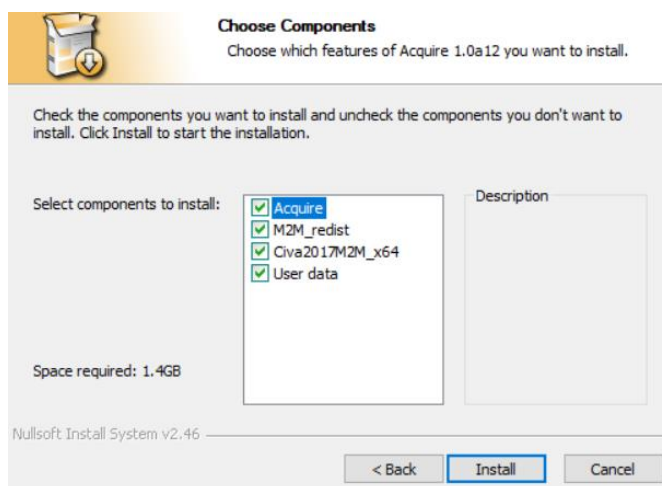
- First, the following windows will appear:



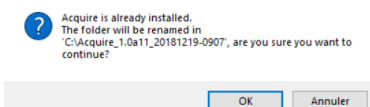
- Select the language and click the «OK» button.



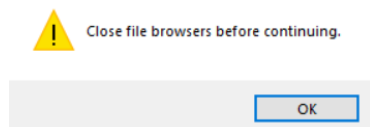
Click the «**Next**» button



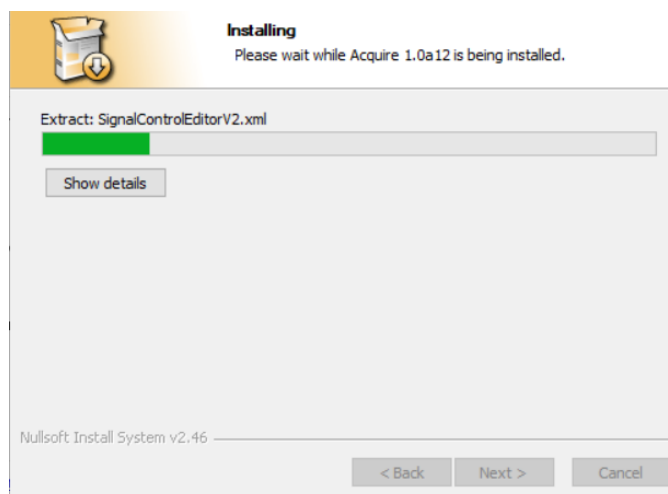
Select all components then click on the «**Install**» button



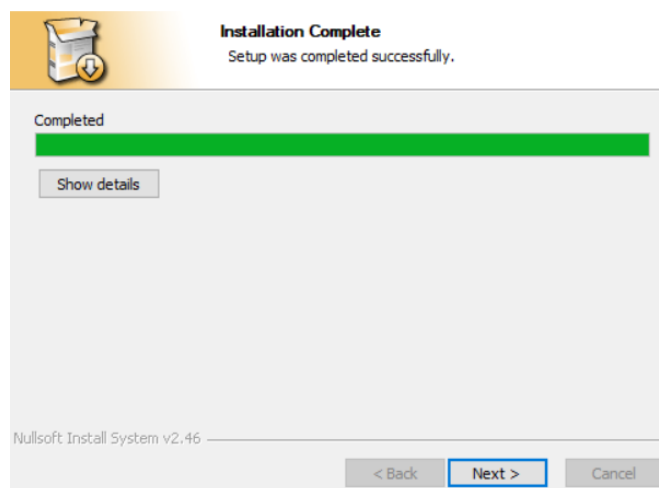
In the case of a previous Acquire version already installed on the computer, this version will be automatically renamed. Click on the «**OK**» button.



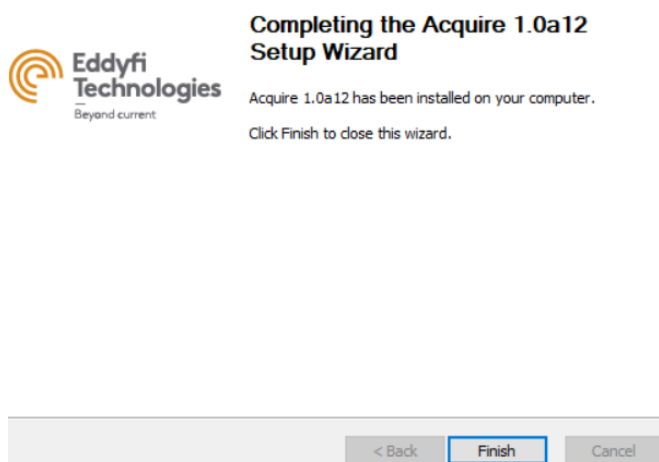
Close all File Explorer windows and then click «**Ok**»



When the software installation is finished, the following window appears:



Click on the «Next» button.



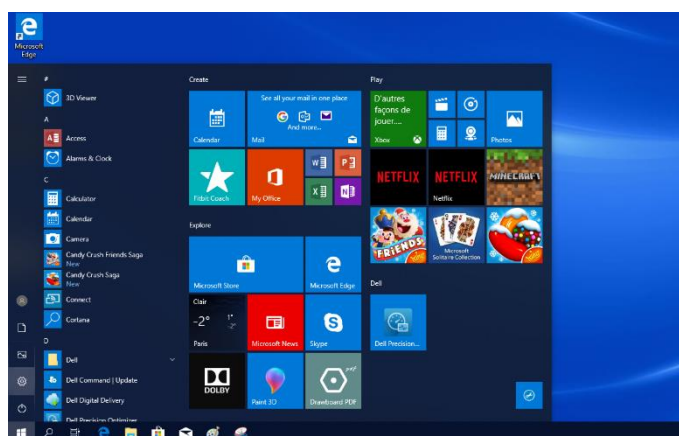
The Acquire software installation is finished. The default installation folder is C:\Acquire. A shortcut Acquire has been created automatically on the desktop.

## 4. Panther USB driver installation

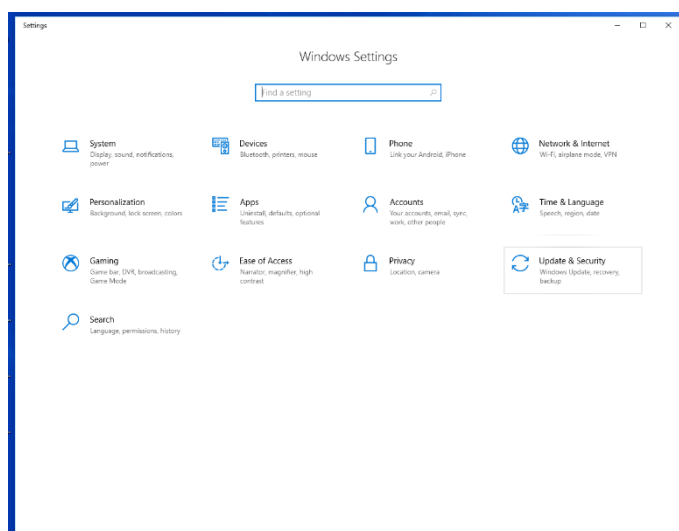
### 4.1 Disable driver signature enforcement. Mandatory with Windows 8 and Windows 10

To install the USB driver of the PANTHER with Windows 8 and Windows 10, it is mandatory to disable driver signature enforcement.

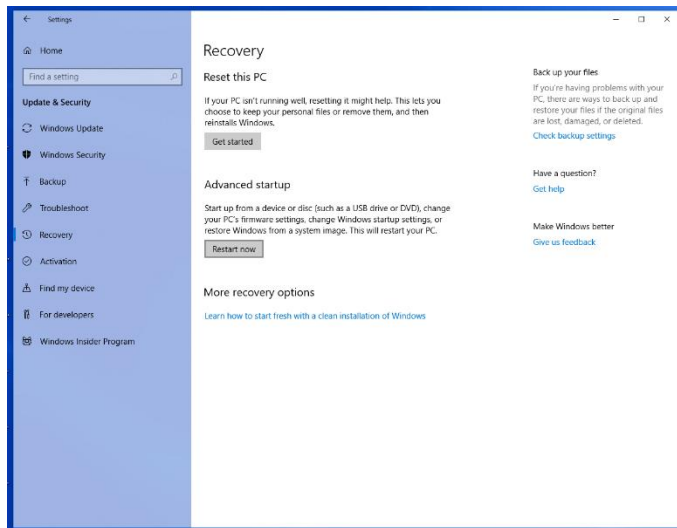
1. Display the menu on the lower-right corner of the screen (Windows 8) or on the lower-left corner of the screen (Windows 10) and click on « **Settings** » icon



2. Select « Update & Security »



3. Select the item “Recovery” and then click on “Restart now” under the Advanced startup section



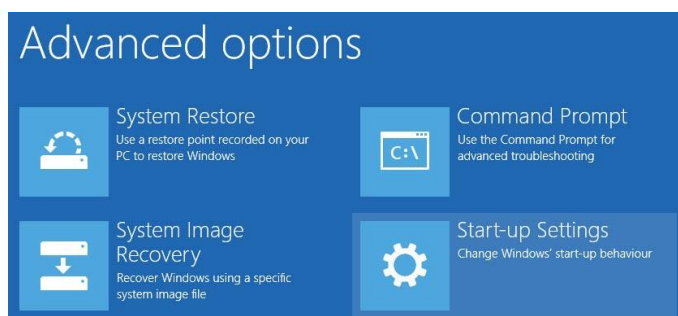
4. After rebooting, select the option « Troubleshoot »



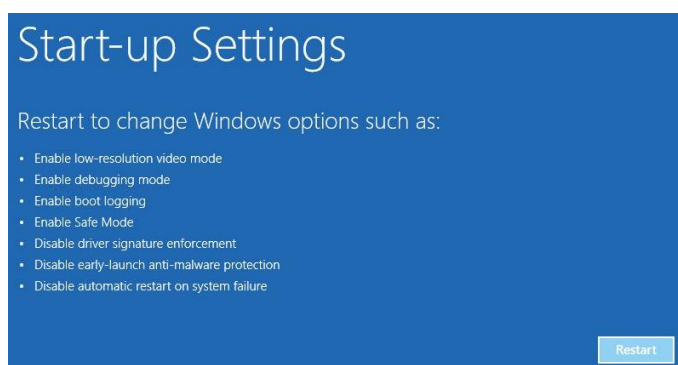
5. Select « Advanced options »



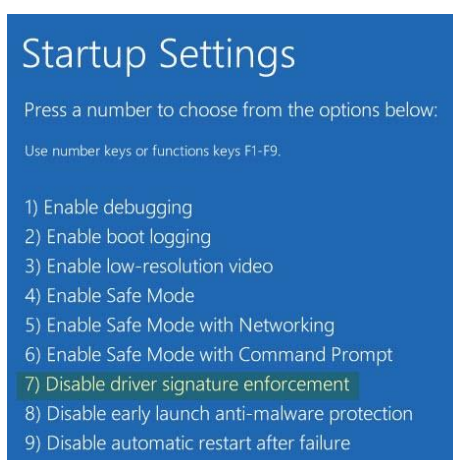
6. Select « Start-up Settings ». Depending on your Windows version, you may have to click on “See more recovery options” at the bottom of the page to display this option.



7. The Startup Settings option will allow you to boot your Windows system in different modes. Just click on the “Restart” button to continue.



8. Since we need to install unsigned drivers, press F7 on your keyboard to select the seventh option “Disable driver signature enforcement.”

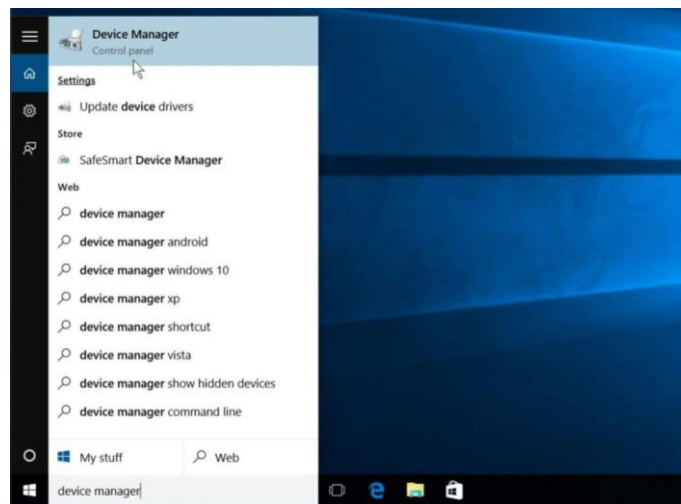




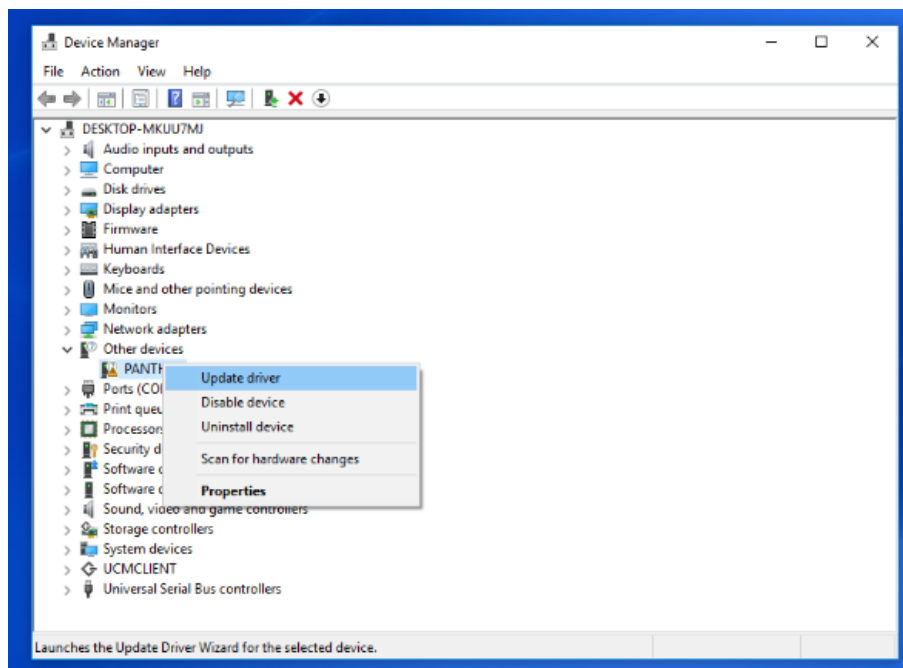
As soon as you press the key, your system will reboot Windows. Now you can install any unsigned driver including the Acquire one. After driver installation, restart your system, and the Driver Signature Enforcement will be automatically enabled from the next reboot.

## 4.2 Driver installation

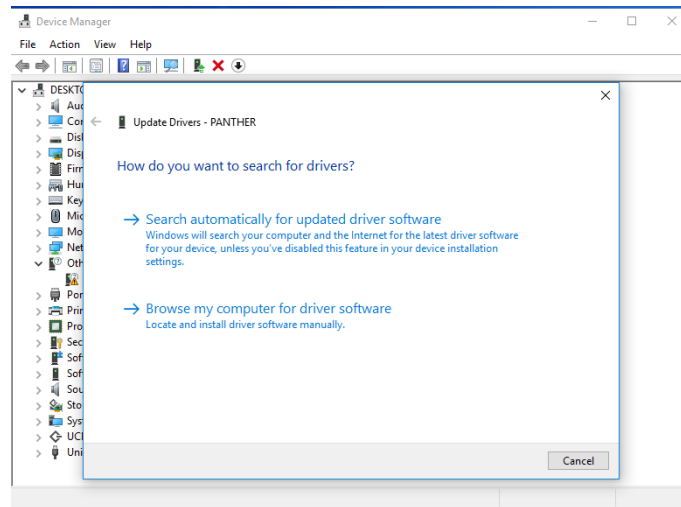
1. Connect the Panther device to a USB 3 port of the computer and turn it on.
2. On the Windows "Search Box" type "Device Manager" and select "Device Manager" item.



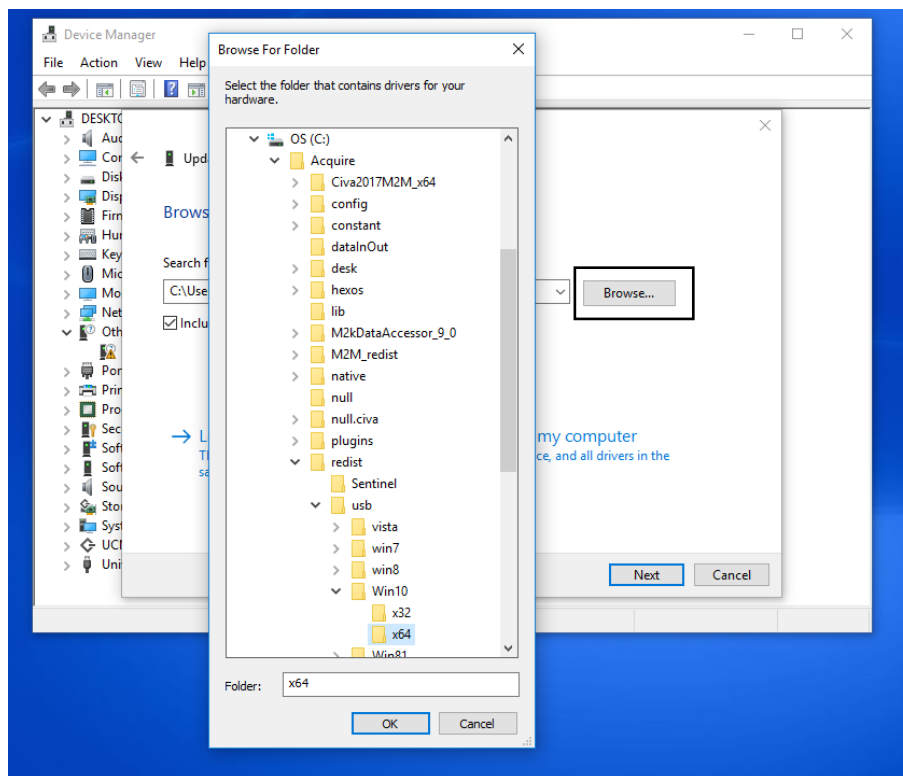
3. Open the "Device Manager" panel. Search for the Panther unit under the section "Other devices" and click right on it. Select Update driver.



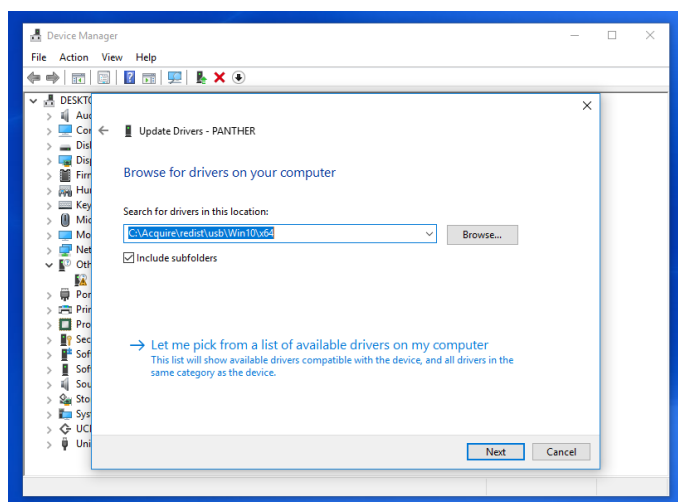
4. Select the option “Browse my computer for driver software”



5. Click on “Browse” and search for the “usb” folder located into Acquire installation directory. By default, the path is: C:\Acquire\redist\usb. Select the folder that corresponds to the version of your operating system. For instance: C:\Acquire\redist\usb\Win10\x64

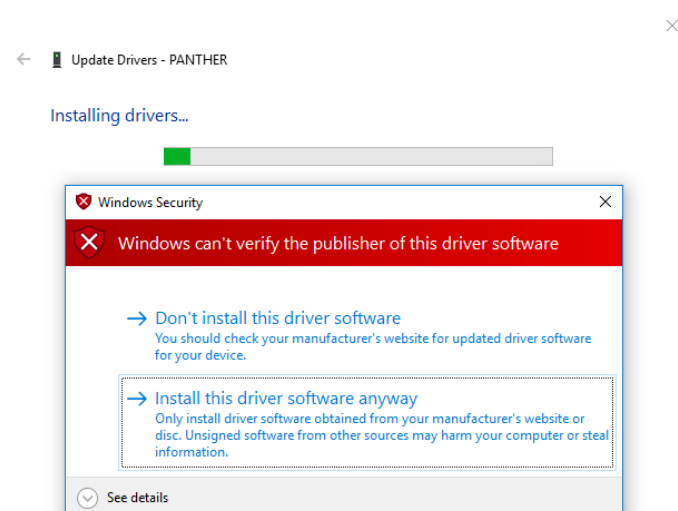


6. Once the driver path is correct, press “Next”

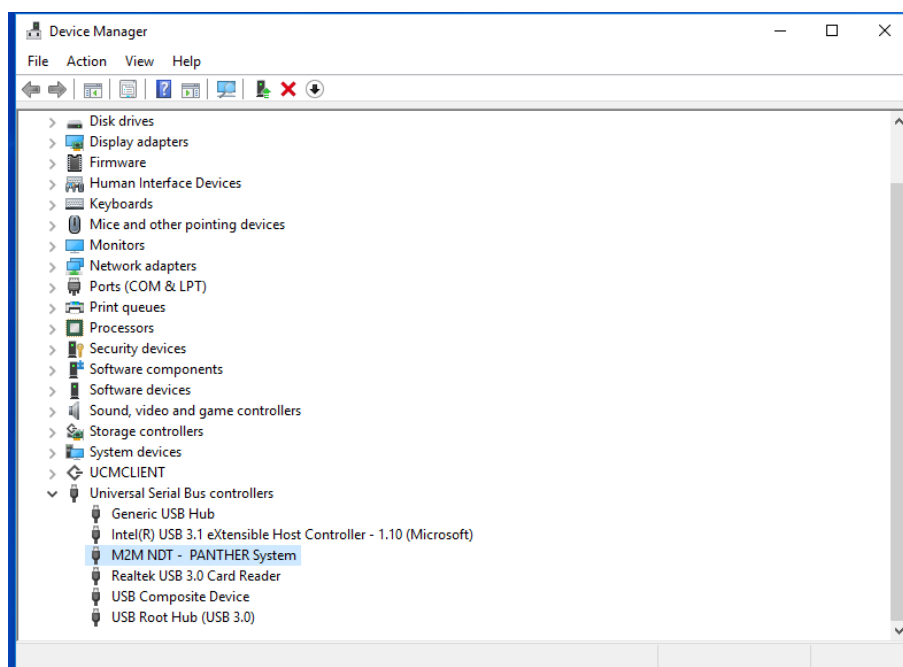
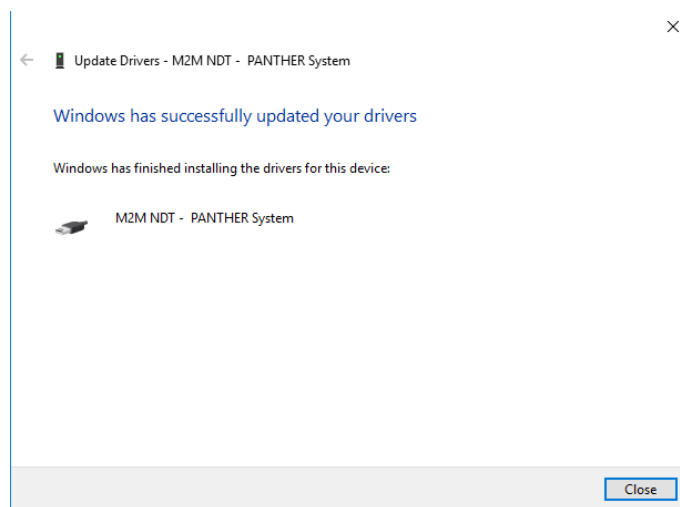


- If you get the following message “Windows encountered a problem installing the driver software for your device”, please make sure you have disabled the driver signature enforcement (section 4.1)

If you get a “Windows Security” message, click on install anyway. This message is displayed because the Panther driver is unsigned, and you have successfully disabled the driver signature enforcement.



- After installation, press “Close”. Please make sure that the Panther is displayed without error icon on the device manager panel. The system will be listed under the section “Universal Serial Bus Controllers” with the name “M2M- NDT – PANTHER System”



## 5. Start up Acquire software

---

To start Acquire software, double click on Acquire shortcut on the desktop.

You can also start Acquire software by double clicking on "Go\_Acquire\_US.bat" located into the Acquire installation directory (By default: C:\Acquire)