

TUBEPRO 6 LICENSING

**Instructions to activate and
manage licenses.**

TABLE OF CONTENT

- NEW SUBSCRIPTION
- UPDATE AND SUBSCRIPTION RENEWAL WITH A CLOUD KEY
- UPDATE AND SUBSCRIPTION RENEWAL WITH A TP5 HARDKEY
- LICENSE MANAGEMENT
- TRIALS

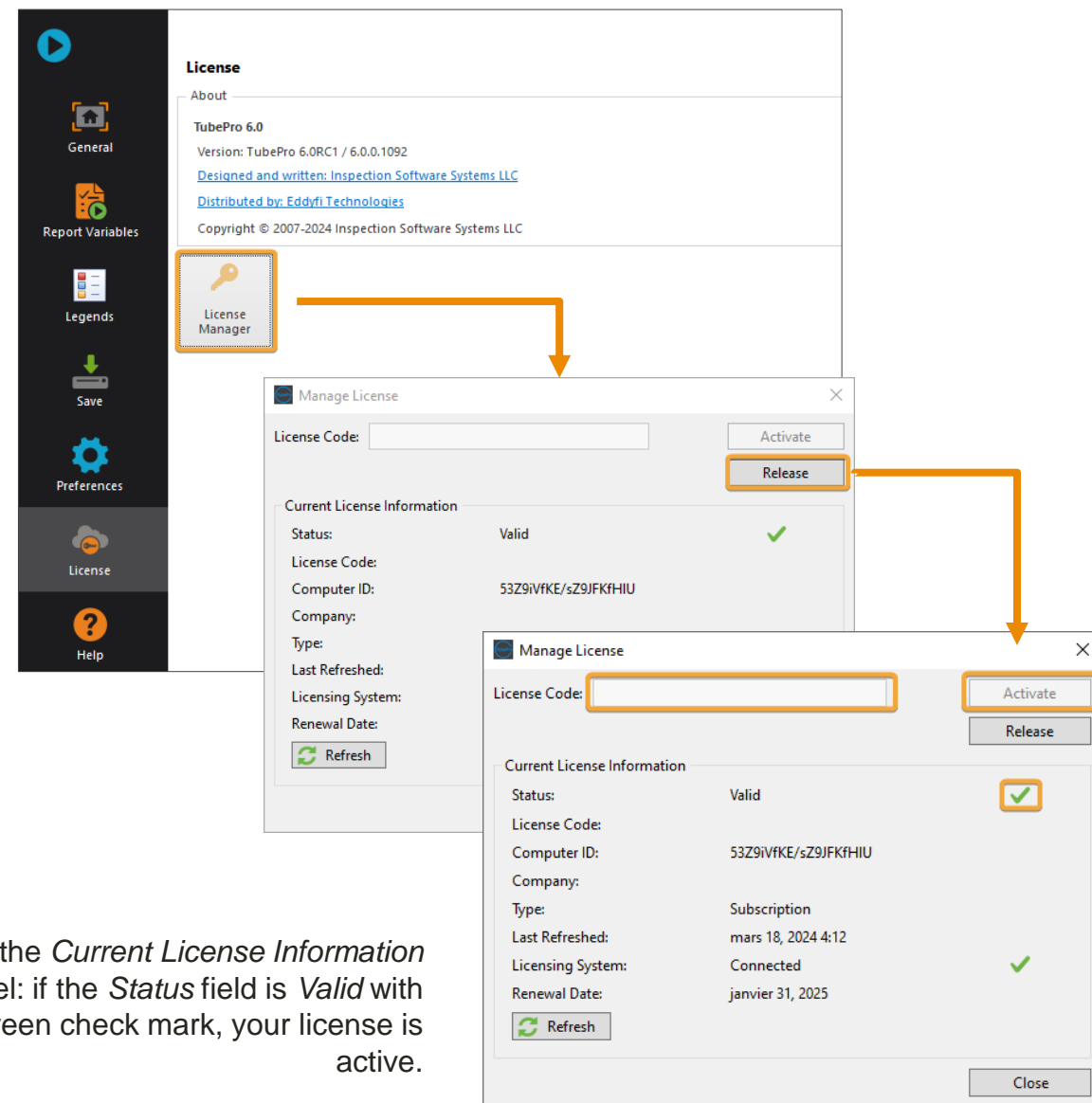
NEW SUBSCRIPTION



PURCHASING A TUBEPRO-6.X

ACTIVATE A NEW SUBSCRIPTION

1. Make sure your computer is connected to the internet. This is required to activate a license.
2. Launch TubePro
3. Access the *Manage License* panel:
 - a) **If no valid license is currently activated** on this computer, the *Manage License* panel will automatically open.
 - b) **If there is already a valid license (different key or trial) activated on the computer:**
 - I. In the backstage view, click on *License* and then on *License Manager*.
 - II. In the *Eddyfi License Manager* panel, click on *Manage*.
4. In the *Manage License* panel, input the license code provided by email in the *License Code* field and click *Activate*.



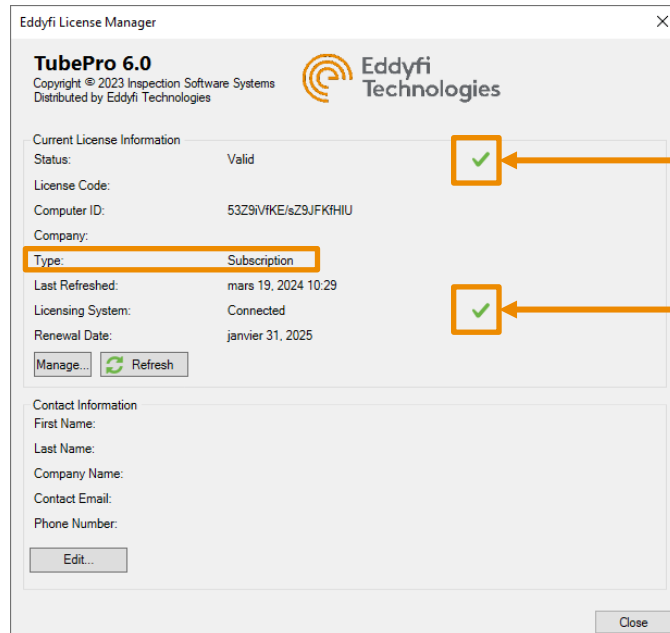
In the *Current License Information* panel: if the *Status* field is *Valid* with a green check mark, your license is active.

UPDATE AND SUBSCRIPTION RENEWAL WITH A CLOUD KEY

PURCHASING A TUBEPRO-6.X-SSP OR TUBEPRO-6.X-CONVERT

RENEW AN EXISTING SUBSCRIPTION

1. After the order was processed by Eddyfi, make sure your computer is connected to the internet.
2. Launch TubePro
3. The license will automatically be refreshed. You can confirm the next *Renewal Date* at the bottom of the *Manage License* panel.



In the *Current License Information* panel: if the *Status* field is *Valid* with a green check mark, your license is active.

In the *Current License Information* panel: if the *Licensing System* field is *Connected* with a green check mark, the software has the required internet access to refresh the license.

UPDATE AND SUBSCRIPTION RENEWAL WITH A TP5 HARDKEY

PURCHASING A TUBEPRO-6.X-SSP

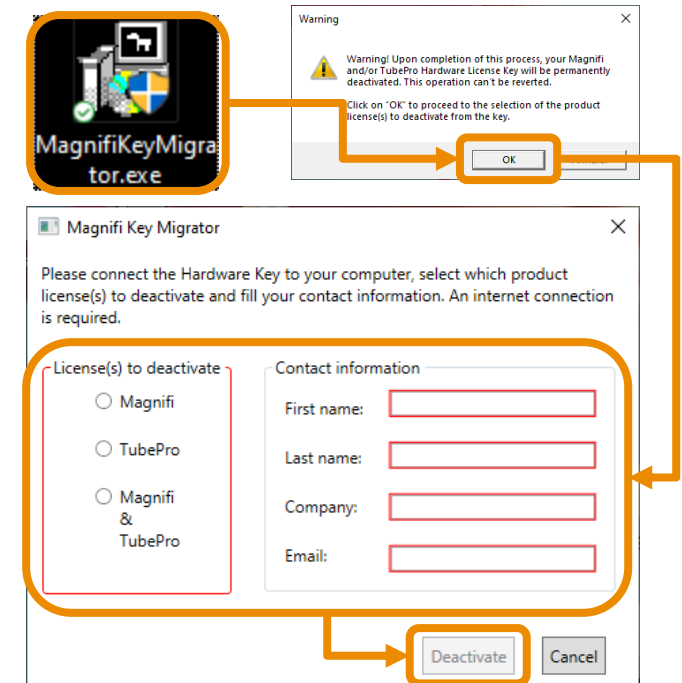
MIGRATION PROCEDURE

PART A: DISABLING YOUR HARDWARE KEY (HK)

1. Connect your USB dongle to your computer.
2. Make sure your computer is connected to the internet.
3. Save the executable *MagnifiKeyMigrator.exe* provided by Eddyfi on your computer.

<https://eddyfi.com/doc/Software/download/MagnifiKeyMigrator-1.0.exe>

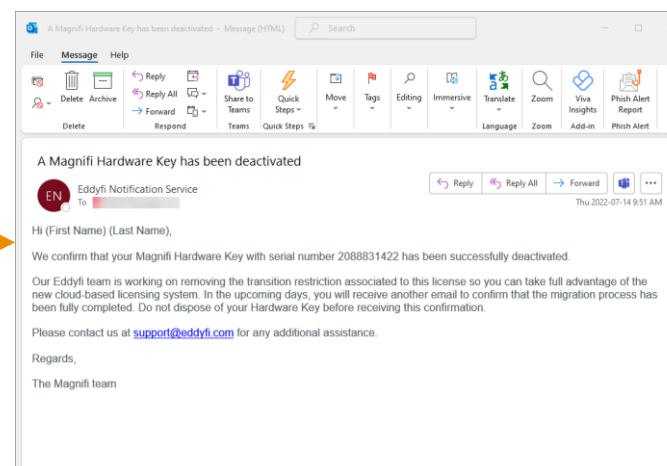
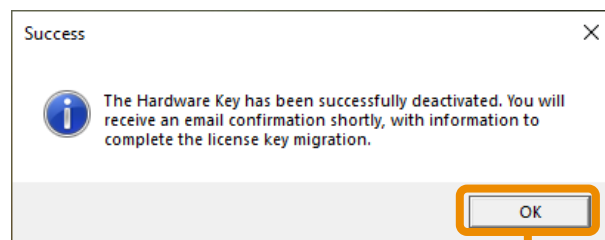
1. Run the executable.
2. After reading the *Warning* message, click *OK* to acknowledge.
 - **Note:** The new cloud key **CANNOT** be used to run both softkey and hardkey versions of TubePro. Upon deactivating the license on your key, you will lose access to hardkey versions of TubePro.
3. Select the license type (TubePro) you want to deactivate.
4. Fill out the *Contact Information*.
5. Click the *Deactivate* button.



MIGRATION PROCEDURE

PART A: DISABLING YOUR HARDWARE KEY (HK)

9. Click *OK* to close the window that confirms the deactivation of the key.
10. You will also receive an email confirming that your HK has been deactivated.
11. Wait for the email confirming that your new cloud-based license has been updated.



MIGRATION PROCEDURE

PART B: ACTIVATING THE LICENSE

12. Open the most recent version of the software.

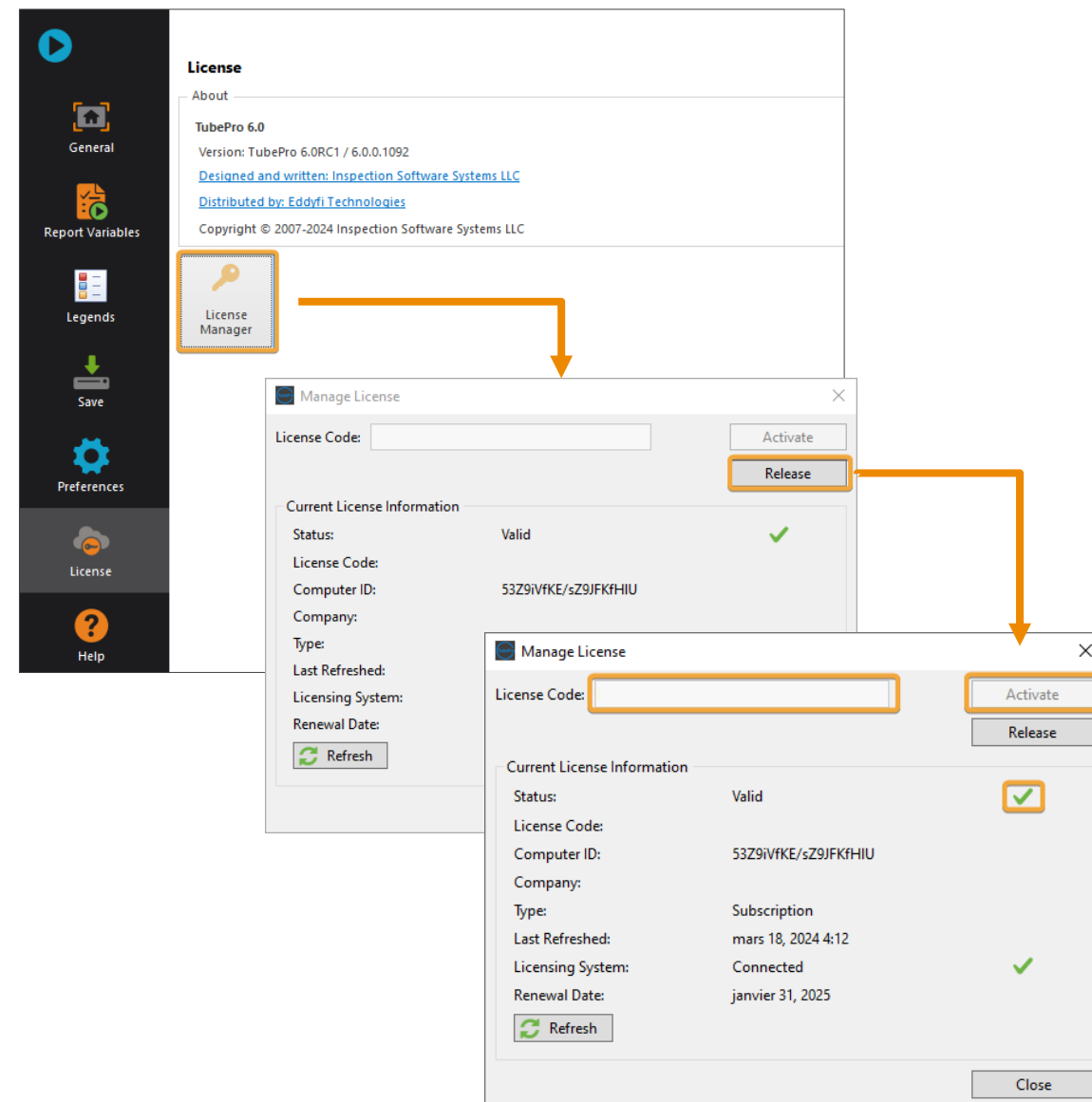
13. Access the *Manage License* panel:

a) **If no valid license is currently activated** on this computer, the Manage License panel will automatically open.

- i. Enter the license code provided by Eddyfi.
- ii. Click on. *Activate*.

b) **If there is already a valid license (trial) activated on the computer:**

- i. At TubePro launch, in the backstage view, click on *License*.
- ii. In the *License* page, click on *License Manager*.
- iii. In the *Eddyfi License Manager* panel, click on *Manage*.
- iv. In the *Manage License*, click on *Release*.
- v. Enter the license code provided by Eddyfi and click on *Activate*.



LICENSE MANAGEMENT

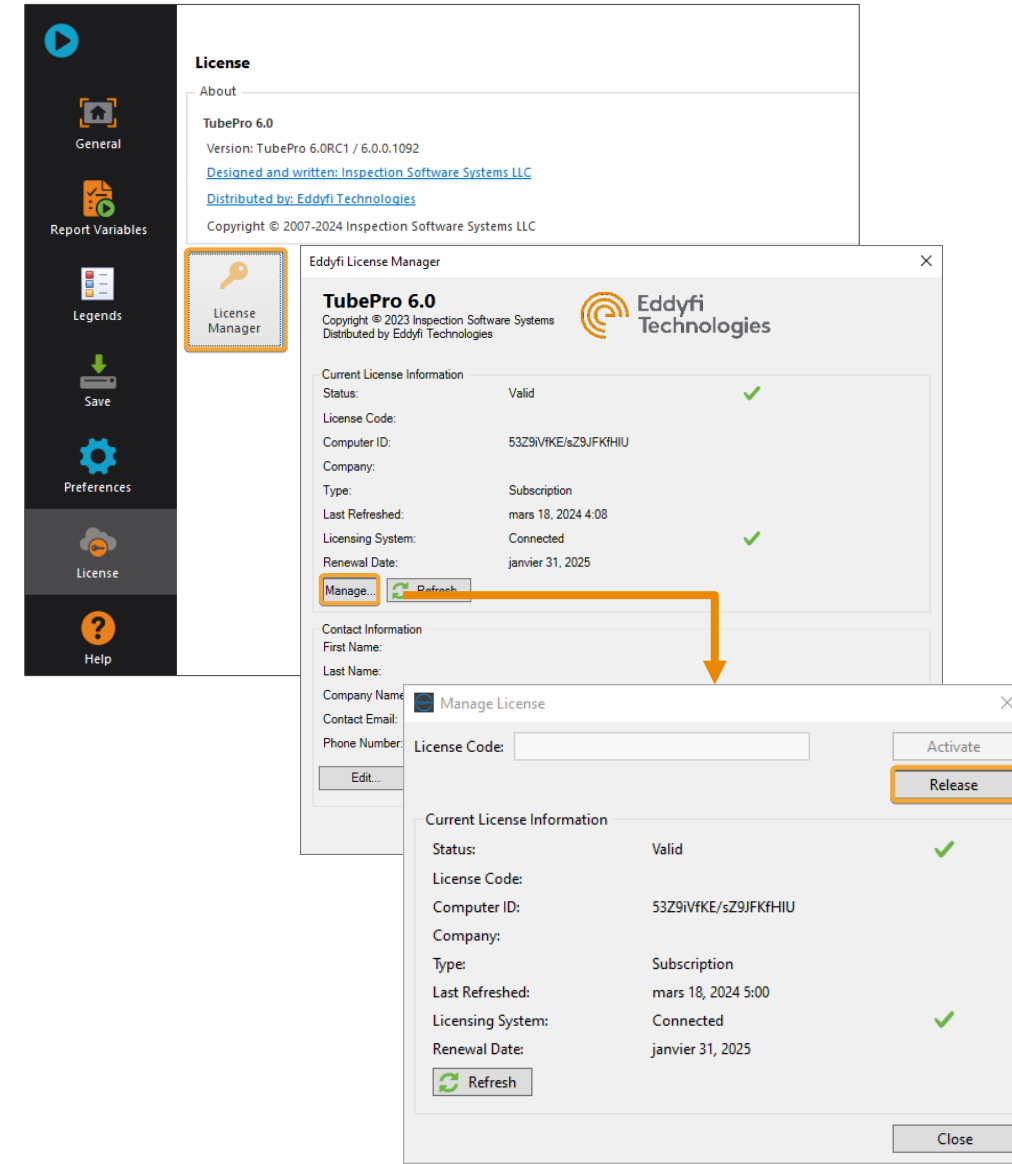


HOW TO MOVE THE LICENSE TO A DIFFERENT COMPUTER

LICENSE MANAGEMENT

PART A: HOW TO RELEASE FROM A COMPUTER

1. Make sure the computer is connected to the internet.
2. Launch TubePro.
3. In the backstage view, click on *License*.
4. In the *License* page, click on *License Manager* icon.
5. In the *Eddyfi License Manager* panel, click on *Manage*.
6. In the *Manage License*, click on *Release*.
7. Carefully note the license code as it will be required for activation on the second computer.

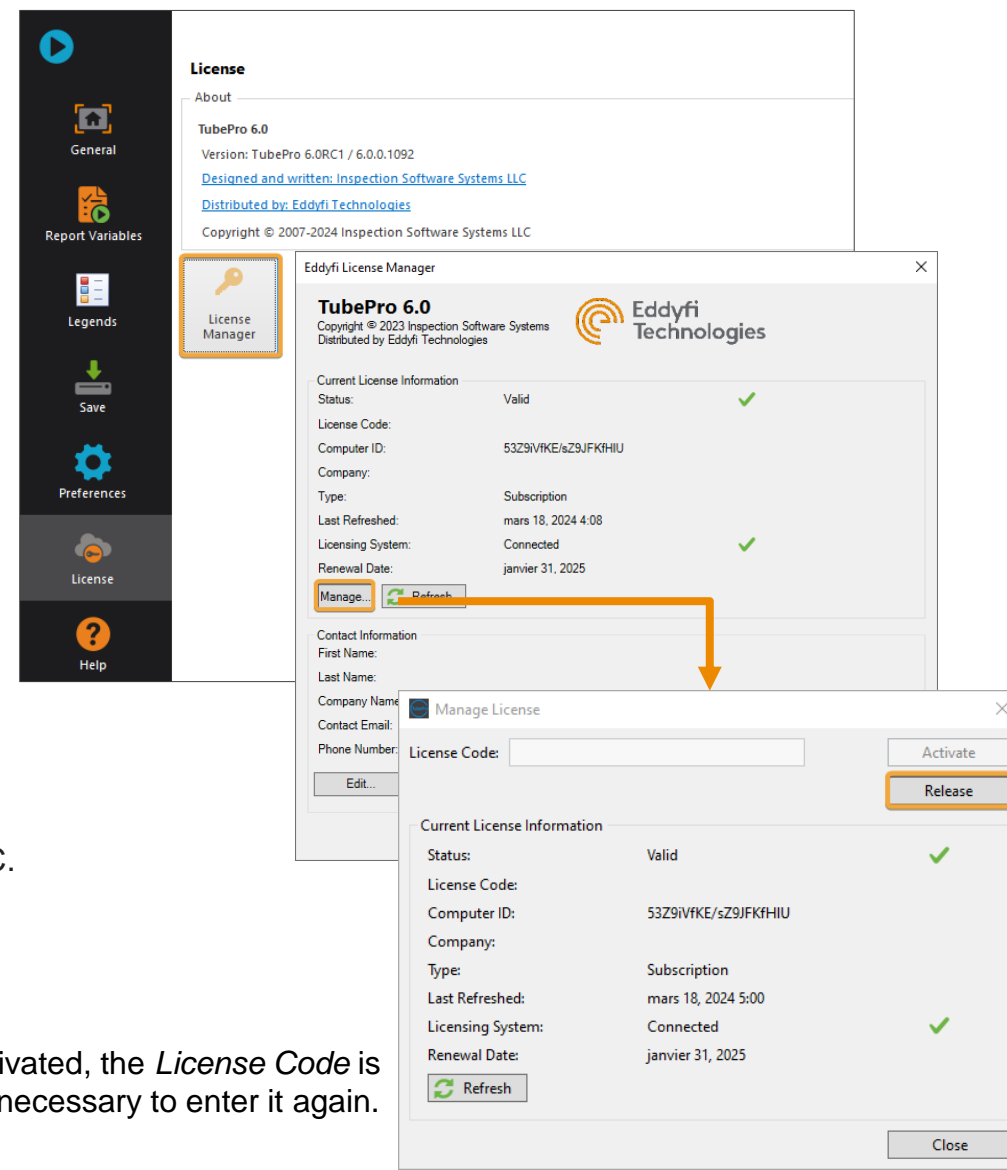


LICENSE MANAGEMENT

PART B: ACTIVATE ON OTHER COMPUTER

1. Make sure your computer is connected to the internet.
2. Launch TubePro
3. Activate the code on the second PC:
 - a) **If no valid license is currently activated** on this computer, the *Manage License* panel will automatically open.
 - i. In the *Manage License* panel, enter the *License Code*.
 - ii. Click on *Activate*.
 - b) **If there is already a valid license (different key or trial) activated:**
 - I. In the backstage view, click on *License* and click on *License Manager*.
 - II. In the Eddyfi *License Manager* panel, click on *Manage*.
 - III. In the *Manage License* panel, enter the *License Code* released from the first PC.
 - IV. Click on *Activate*.

Note: After being activated, the *License Code* is saved, and it is no longer necessary to enter it again.



TRIALS

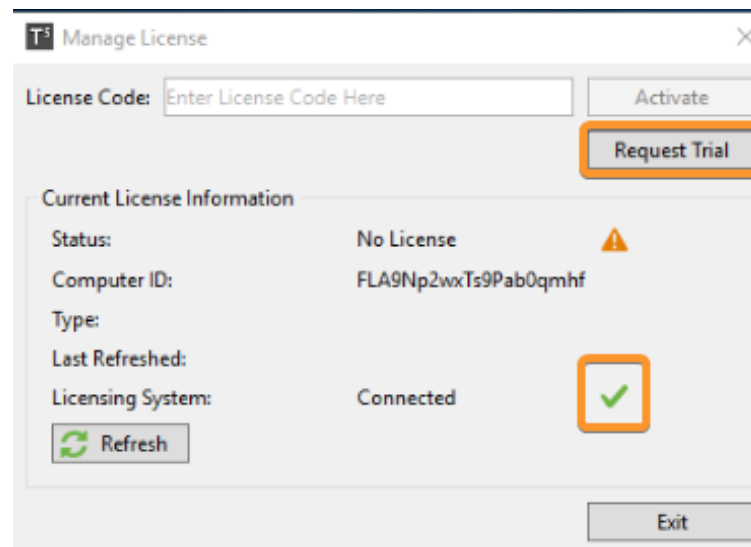


7-DAY & 30-DAY TRIAL PERIODS

7-DAY TRIAL

7-day trials are available for anyone but **can only be activated once** for a given computer on any versions.

1. Make sure your computer is connected to the Internet. Once the trial is activated, the computer can be disconnected from the Internet.
2. Start the desktop software.
3. The *Manage License* panel will automatically appear on the screen as there is no valid license activated on the computer.
4. Click *Request Temporary License* or *Request Trial* and fill in the form. The trial will start immediately.

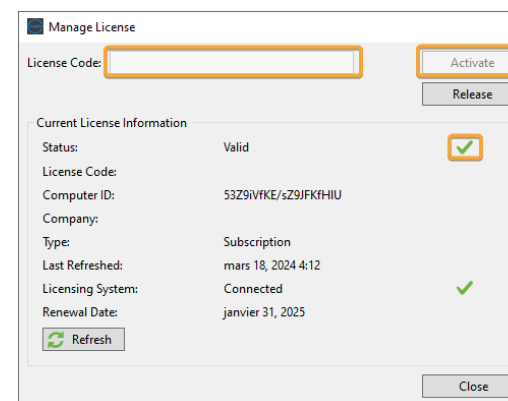
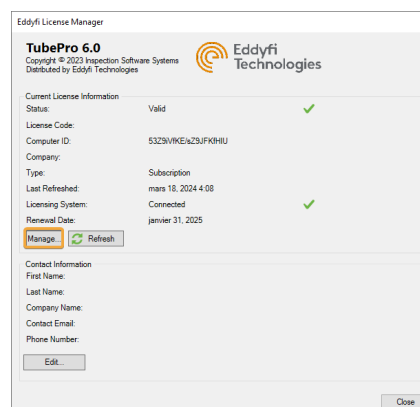
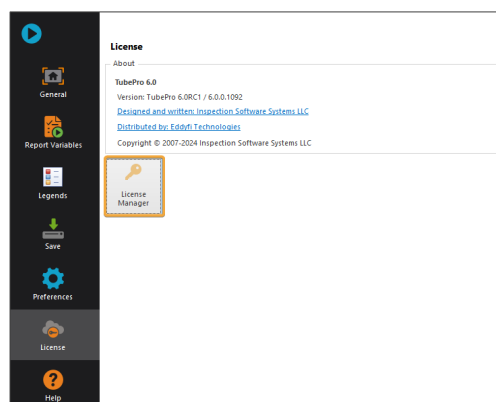


In the *Current License Information* panel: if the *Licensing System* field is *Connected* with a green check mark, the software has the required internet access to activate the license.

30-DAY TRIAL

For 30-day trials, a license code must be provided by a sales representative.

1. Make sure your computer is connected to the internet. This is required to activate a license.
2. Start the desktop software.
3. Access the *Manage License* panel:
 - a) If no valid license is currently activated on this computer, the *Manage License* panel will automatically open.
 - b) If there is already a valid licence (different key or trial) activated on the computer:
 - I. At TubePro launch, in the backstage view, click on *License*.
 - II. In the *License* page, click on *License Manager*.
 - III. In the *Eddyfi License Manager* panel, click on *Manage*.
4. In the *Manage License* panel, input the license code provided by email in the *License Code* field and click *Activate*.



In the *Current License Information* panel: if the *Status* field is *Valid* with a green check mark, your license is active.