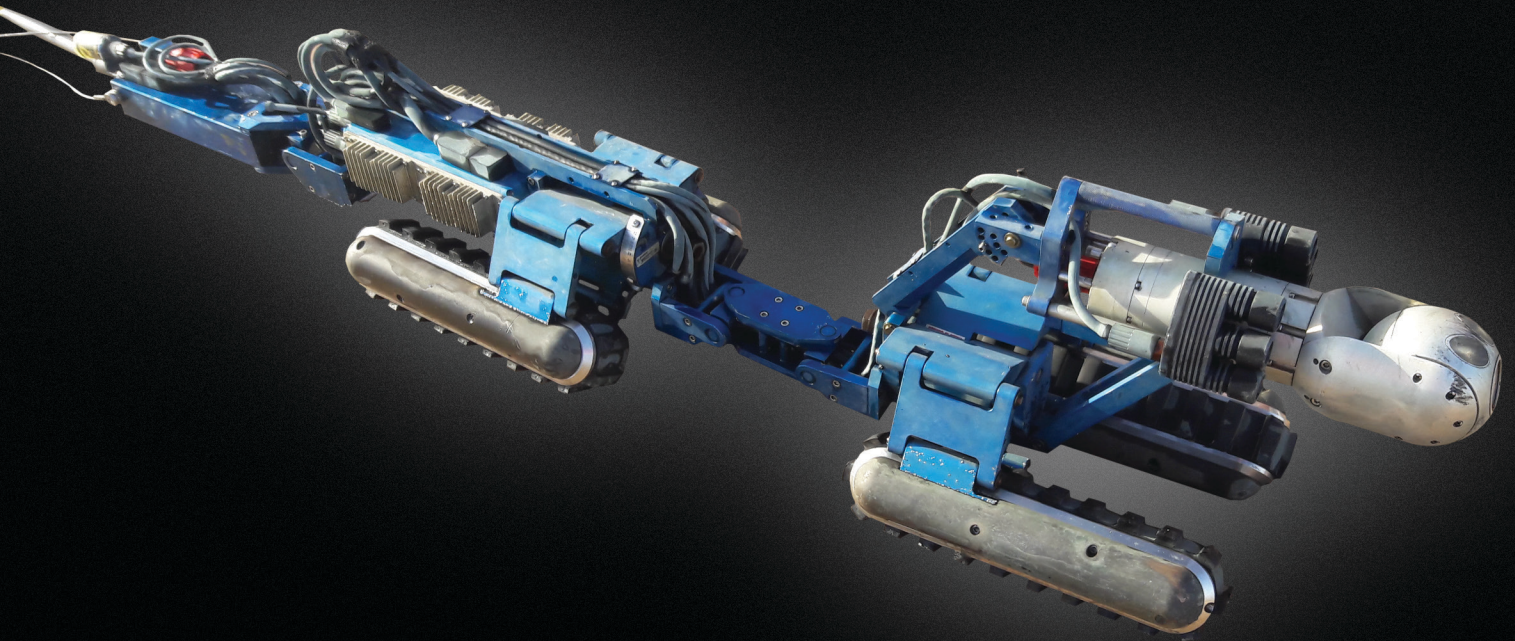


INUKTUN VERSATRAX 300

OnDemand Specialty System



SEE IT ALL COMING. A MILE AWAY.

The Eddyfi Technologies' Inuktun Versatrax 300™ is the solution to long range pipe inspection challenges.

Industries & Applications

- Military/Security
- Mining
- Municipal (Sewer/Water)
- Oil & Gas (Onshore/Offshore)
- Petrochemical

"Inuktun brings a concept to life with flexibility, innovation and ingenuity."

— Robert de Haas, Inuktun Versatrax 300™ operator,
Pacific Gas and Electric Company

The Inuktun Versatrax 300™ delivers

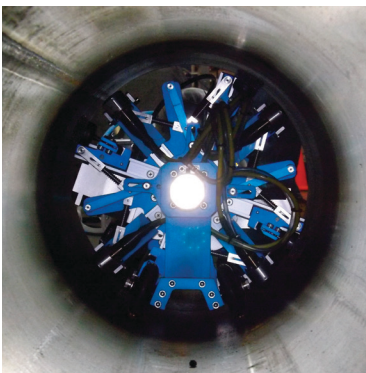
The Eddyfi Technologies' Inuktun Versatrax 300™ is the solution to long range pipe inspection challenges. Able to inspect **more than two kilometres (7,000 feet)** in a single run, the Versatrax 300 includes up to three onboard video cameras, multiple sensor options, and is operable in pipe as small as 300 mm (12 in) internal diameter.

Versatile and customizable, the Versatrax 300 can deploy sensors and tooling in even the most remote and unaccommodating environments and locations. All units are configurable for round pipe or flat surface operation, and adjustable for a range of diameters.

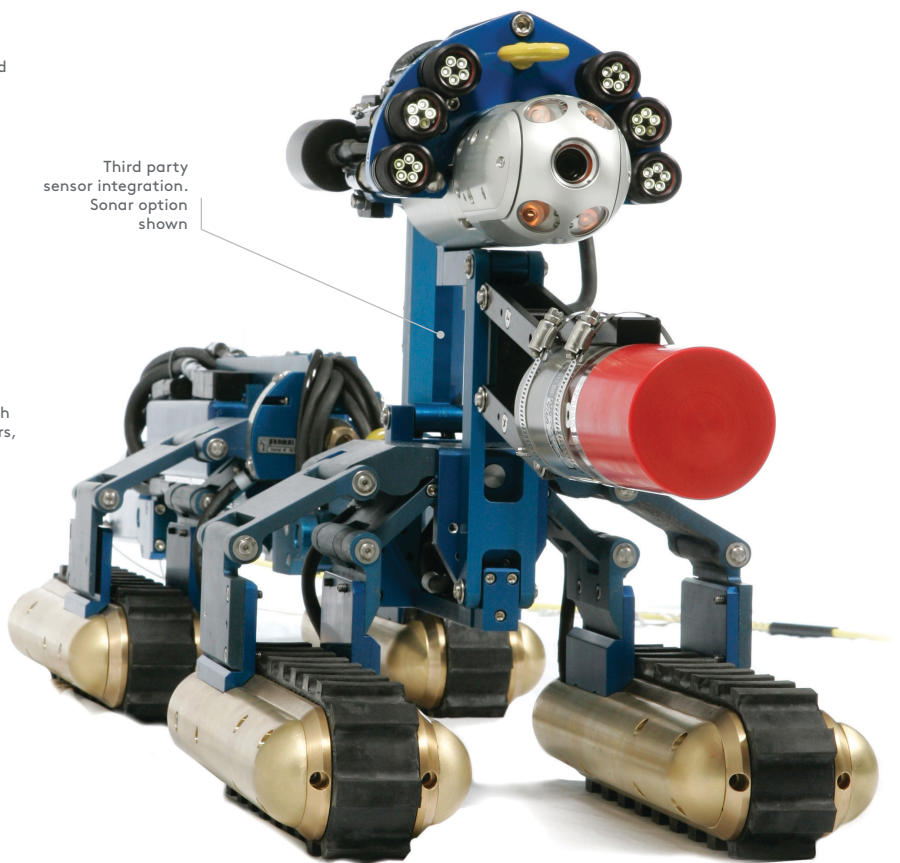
Whatever your remote testing, assessment or construction needs — from video and sonar, to lasers and multi-sensor inspection — the Versatrax 300 delivers, with ultra long-range capability, extra payload capacity and friendly, intuitive control systems.



Tooling Integration:
Combine tooling
requirements for
remote handling and
retrieval operations



Sensor Integration:
Easy integration such
as sonar, NDT sensors,
lasers and chemical
sensors



SPECIFICATIONS

KEY SPECIFICATIONS

| | |
|----------------------------|---|
| Depth Rating | 60 m (200 ft) |
| Maximum Tether Length | 2,130 m (7,000 ft) |
| Maximum Speed | 9 m (30 ft) per minute |
| Vehicle Payload | up to 180 kg (400 lb) |
| Front Facing Camera | Inuktun Spectrum 120HD™ Optional: Middle and/or rear-facing Inuktun camera |
| Operating Temperature | 0 °-50 °C (32 °-122 °F)* |
| Vehicle Weight | 104 kg (230 lb) |
| Minimum Vehicle Dimensions | See drawings below |

Standard Components

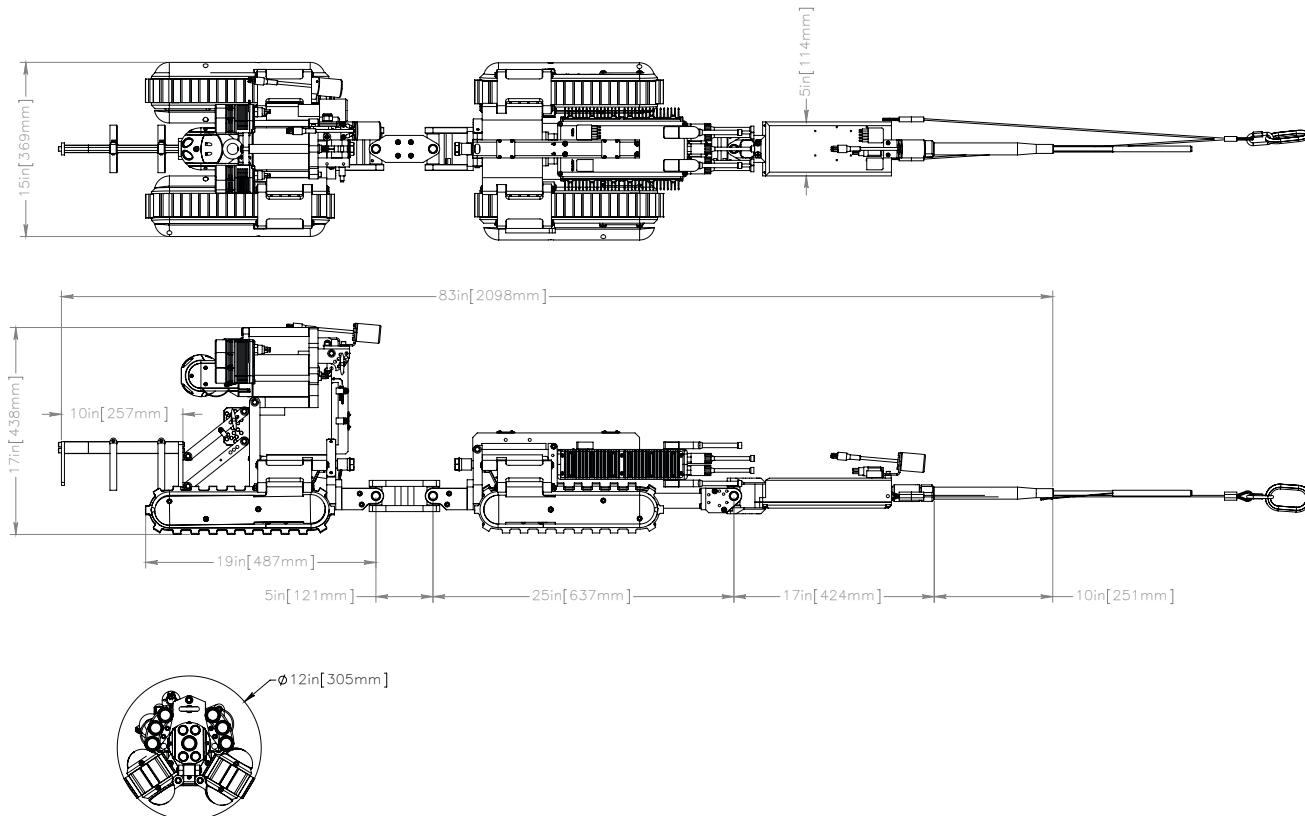
4 × brass Inuktun Minitracs™
1 × Inuktun Spectrum 120HD™ camera
2 × auxiliary LED lights
Parallel chassis and wiring harness
2,130 m (7,000 ft) tether
Rack mount PC-based controller and power supply with ICON™ control and reporting software

*Dependent on operating conditions. Ask your sales expert for more information.



Inuktun Versatrax 300™ standard dimensions

Units in inches [mm]



Minimum ID without motorized raise

The information in this document is accurate as of its publication. Actual products may differ from those presented herein. © 2019 Eddyfi NDT, Inc. Crystal Cam, IM3, and their associated logos are trademarks or registered trademarks of Inuktun Services Ltd. (wholly owned subsidiary of Eddyfi NDT, Inc.) in Canada and/or other countries. Eddyfi Technologies reserves the right to change product offerings and specifications without notice.

www.eddyfi.com

info@eddyfi.com

