

INUKTUN MICROTRAC

OnSite Standard Product



PACKED WITH POWER. CRAWLING WITH TECH.

Small in size but big on capability, Eddyfi Technologies' Inuktun Microtrac™ crawlers are designed for remote applications in confined spaces where performance and reliability are critical.

Industries & Applications

- OEM
- Nuclear
- Oil & Gas (Onshore/Offshore)
- Petrochemical
- Municipal (Sewer/Water)
- Mining

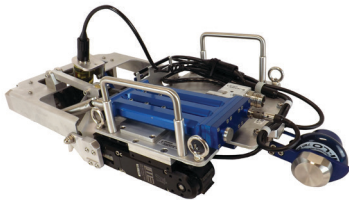
"The Microtracs we purchased from you are high-indestructible and easy to service. The overall design is excellent, incorporating versatility and dependability with an attractive and practical industrial design."

— W. Tessari, Manager/Senior Technician RVT Dept, Maverick Inspection

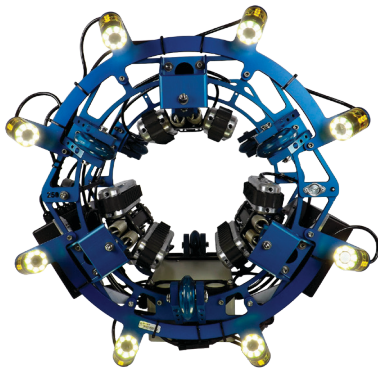
An ideal transporter platform

Small in size but big on capability, Eddyfi Technologies' Inuktun Microtrac™ crawlers are designed for remote applications in confined spaces where performance and reliability are critical. Manufactured from brass, aluminum or stainless steel, these miniature modules operate effectively in dry areas or subsea environments. Powerful and reliable, they make an ideal transporter platform for specialty robotic systems operating in some of the most challenging industrial environments.

As one of the building blocks of Inuktun's Multi-Mission Modular (IM3™) technology, Microtracs are included in many of our standard and customized Inuktun Versatrax™ crawler systems. They are easily combined with Inuktun Spectrum™ cameras, third party components or NDT probes to build fully functional and precise inspection tools. Or, for OEM clients with precise integration and operational requirements, the tracks can be purchased separately with specific options for interface technologies, travel speed and depth rating.

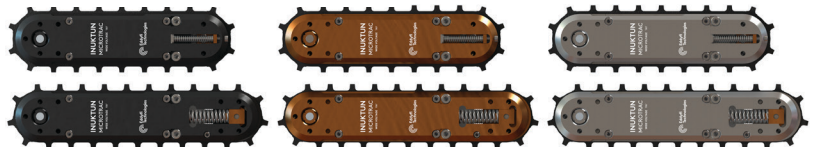


Subsea Operation:
Optional 300 m
(1,000 ft) depth
rating available



Easily combined with
Inuktun's Spectrum™
cameras, third party
components or NDT
probes to build fully
functional and precise
inspection tools

Inuktun Microtrac™ crawlers are available in brass, stainless steel, or aluminum. Each material has its advantages.

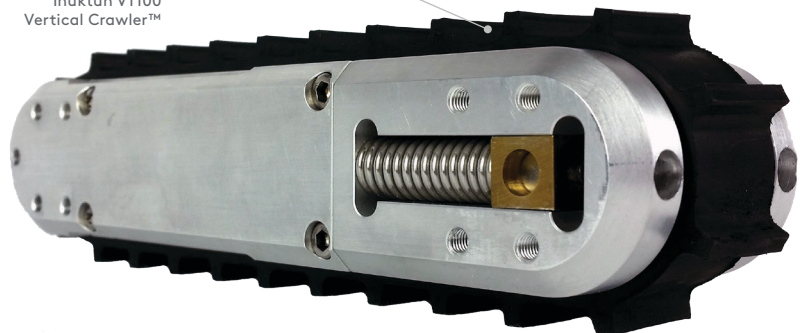


Aluminum
Inuktun's aluminum crawler tracks are normally recommended during system design when portability, vertical operation, or large payloads are important. Standard aluminum tracks are anodized to reduce corrosion and prolong operable life, but they are not recommended for some caustic conditions.

Brass
Brass tracks have several advantages: they are more resistant to certain harsh solutions (e.g. chlorinated solvents), they are more economical than stainless steel, and they are less likely to cause sparks when impacting other materials.

Stainless Steel
Stainless steel tracks are roughly the same weight as brass and offer equal pull. Stainless steel offers the broadest chemical compatibility and is generally preferred for use in radioactive environments as it is easy to decontaminate.

Extended track:
Increased stability is
offered with the
extended Inuktun
Microtrac™ when
transporting larger
vehicles like the
Inuktun VT100
Vertical Crawler™



SPECIFICATIONS

KEY SPECIFICATIONS

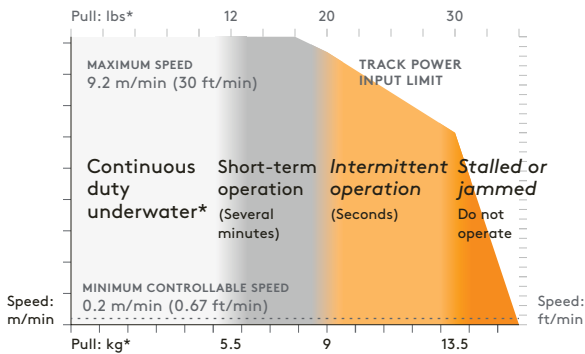
Input Voltage	MC4000 Embedded: 36–70 VDC MC4000 Direct Drive: 0–24 VDC
Communications	RS-485 Inuktun Device Protocol
Depth Rating	150 m (500 ft) Optional: 300 m (1,000 ft)
Standard Dimensions (L x W x H)	197.9 x 64.7 x 59.4 mm (7.8 x 2.55 x 2.34 in)
Extended Dimensions (L x W x H)	228 x 64.7 x 59.4 mm (9.0 x 2.55 x 2.34 in)
Standard Track Weight	Aluminum: 1.1 kg (2.3 lb) Brass: 2.2 kg (4.9 lb) Stainless Steel: 2.1 kg (4.7 lb)

Extended Track Weight	Aluminum: 7.2 kg (15.8 lb) Brass: 16 kg (35.3 lb) Stainless Steel: 15.4 kg (33.9 lb)
Operating Temperature	0 °–50 °C (32 °–122 °F)*
Payload Capacity	see chart below
Pull Rating	see chart below
Speed	see chart below

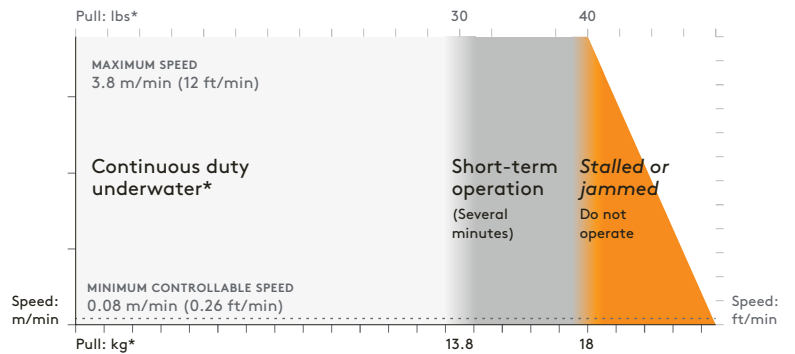
*Dependent on operating conditions. Ask your sales expert for more information.



MC4000 standard load specification

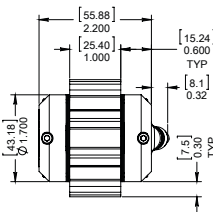
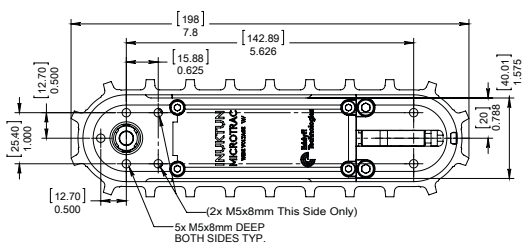


MC4000 high torque load specification

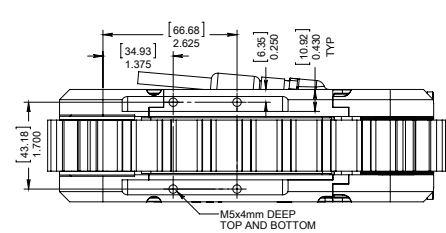


*Endurance in air dependent on track material, ambient temperature, and load. Operating with rated 13.8 kg (30 lb) payload, driving straight on a level surface.

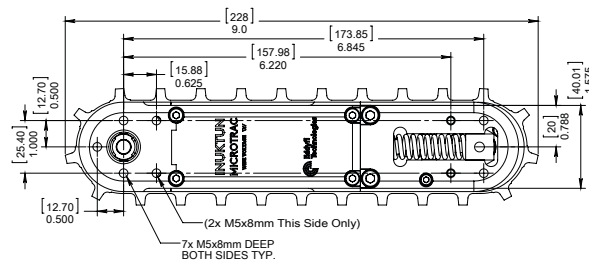
Standard length Inuktun Microtrac™



Units in inches [mm]



Extended length Inuktun Microtrac™



Units in inches [mm]

The information in this document is accurate as of its publication. Actual products may differ from those presented herein. © 2019 Eddyfi NDT, Inc. Crystal Cam, IM3, and their associated logos are trademarks or registered trademarks of Inuktun Services Ltd. (wholly owned subsidiary of Eddyfi NDT, Inc.) in Canada and/or other countries. Eddyfi Technologies reserves the right to change product offerings and specifications without notice.